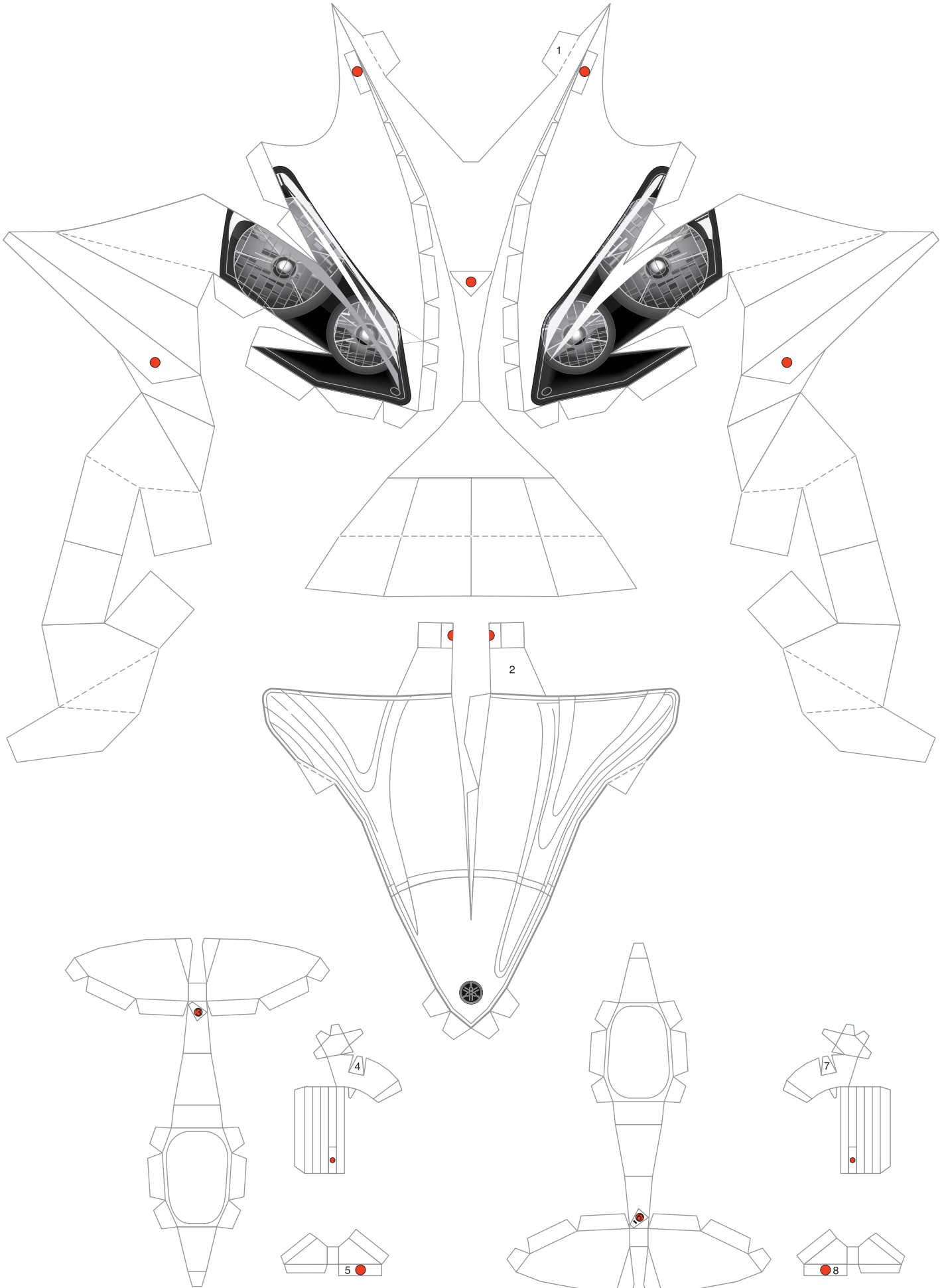
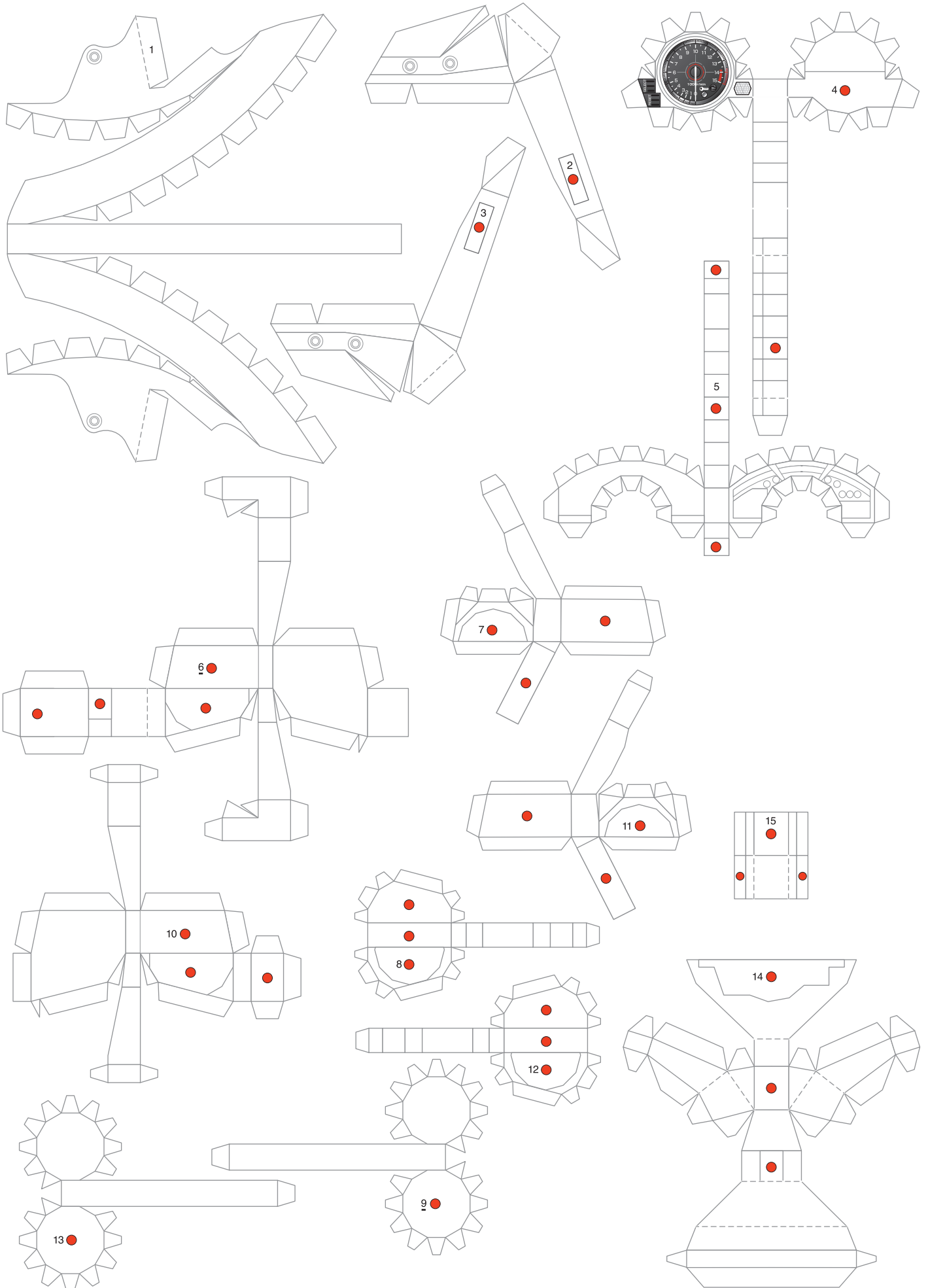


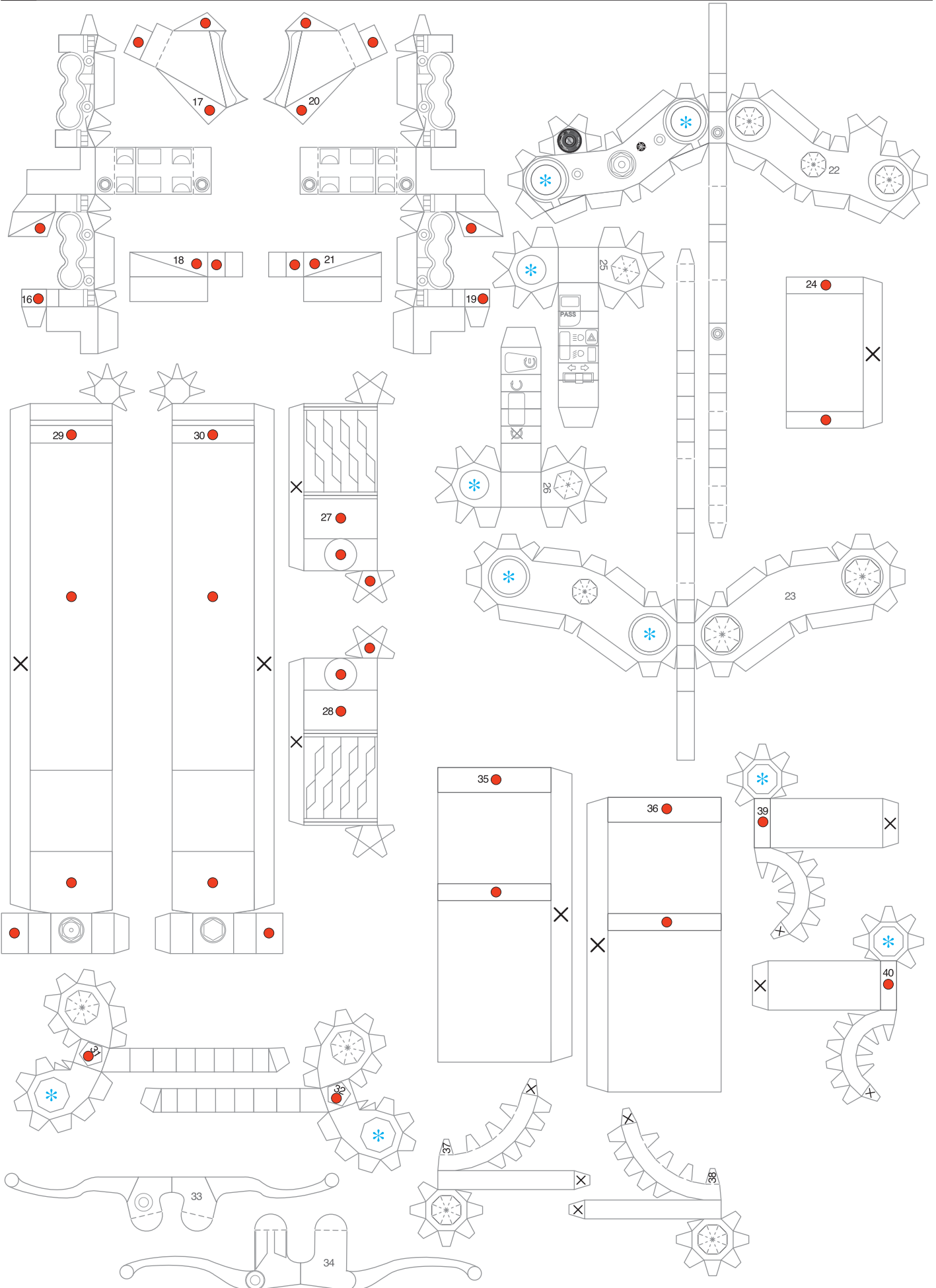
A Front Cowl



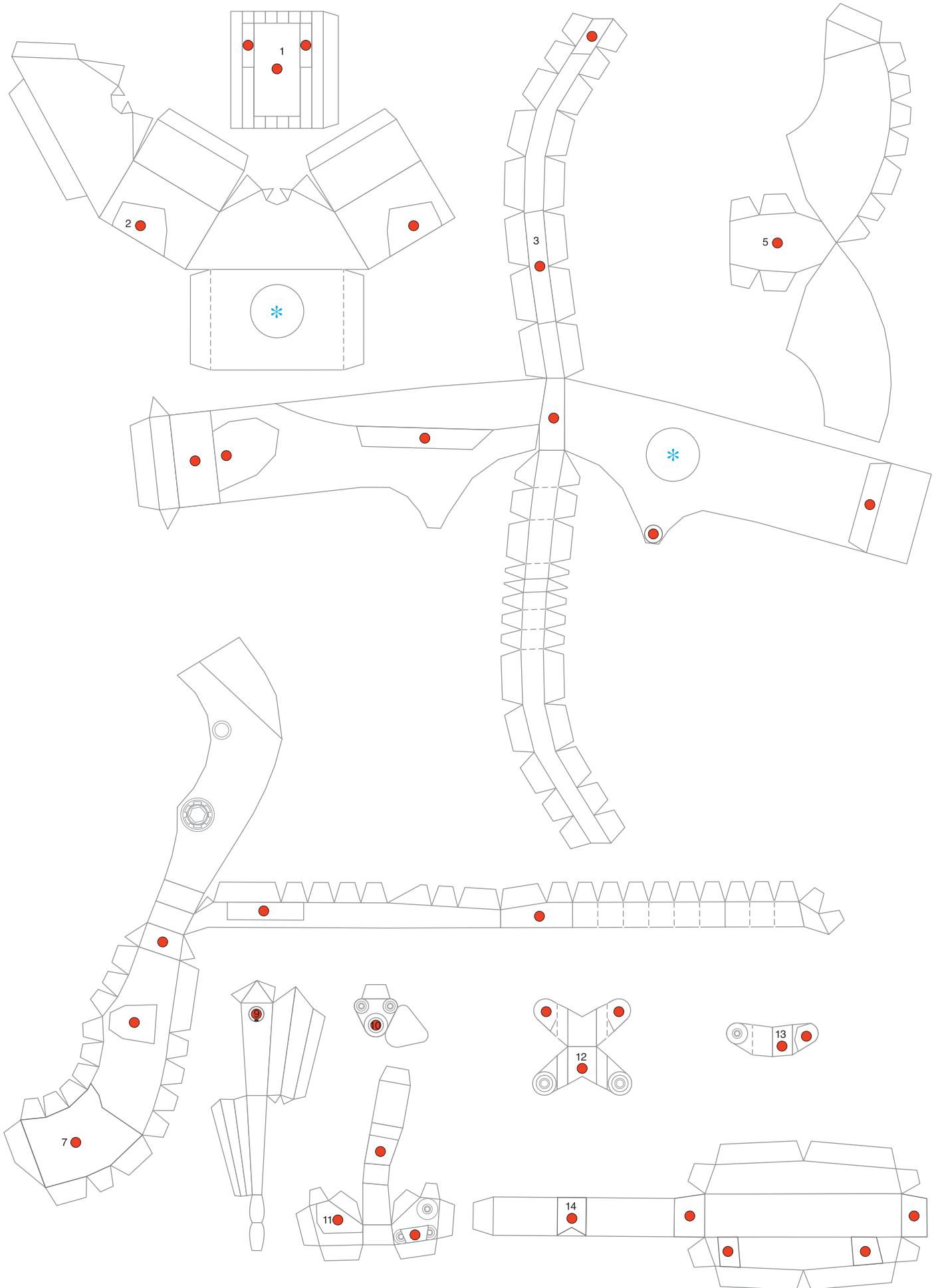
B Front Fender & Meter



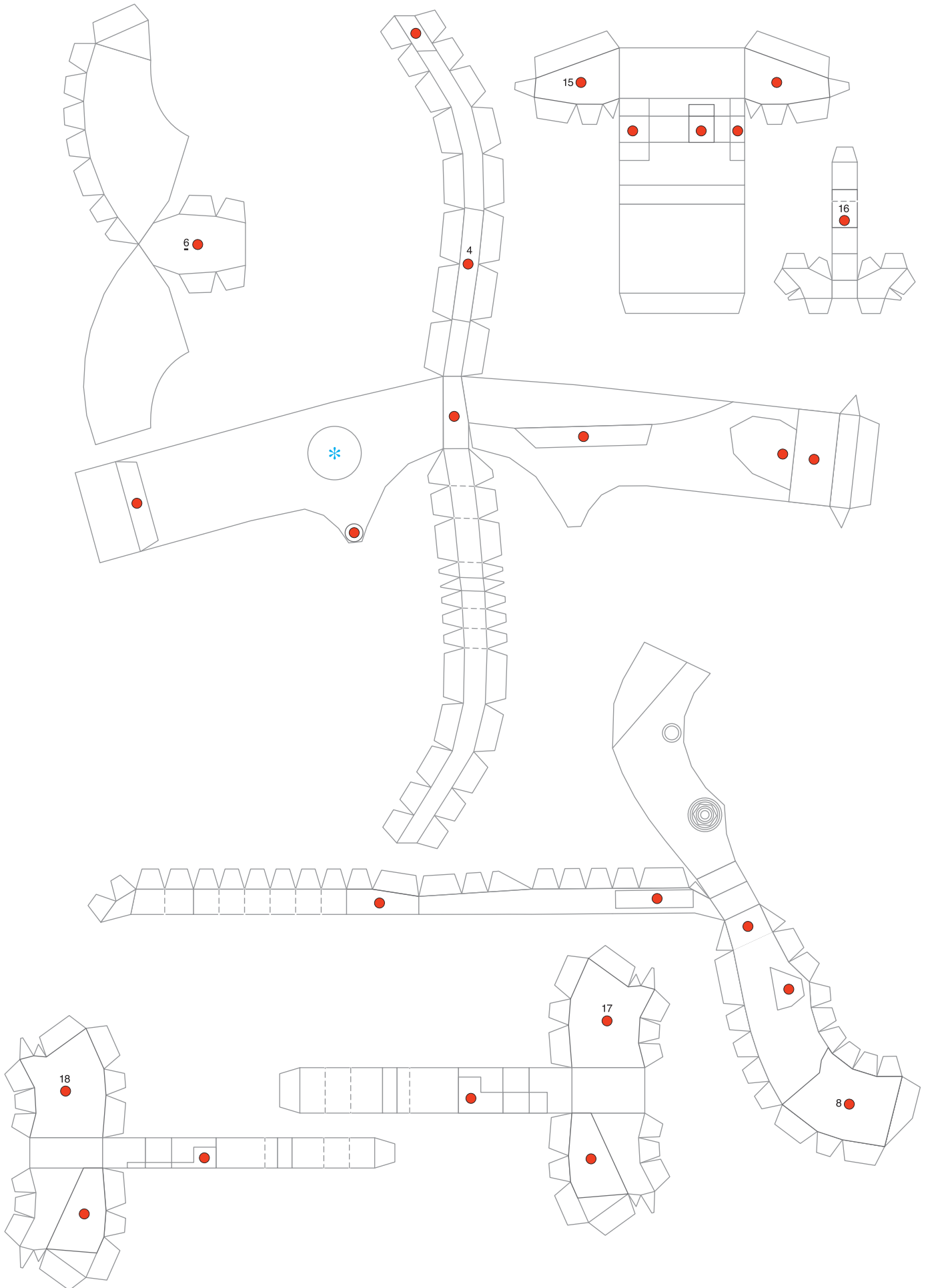
B Brake Caliper & Steering



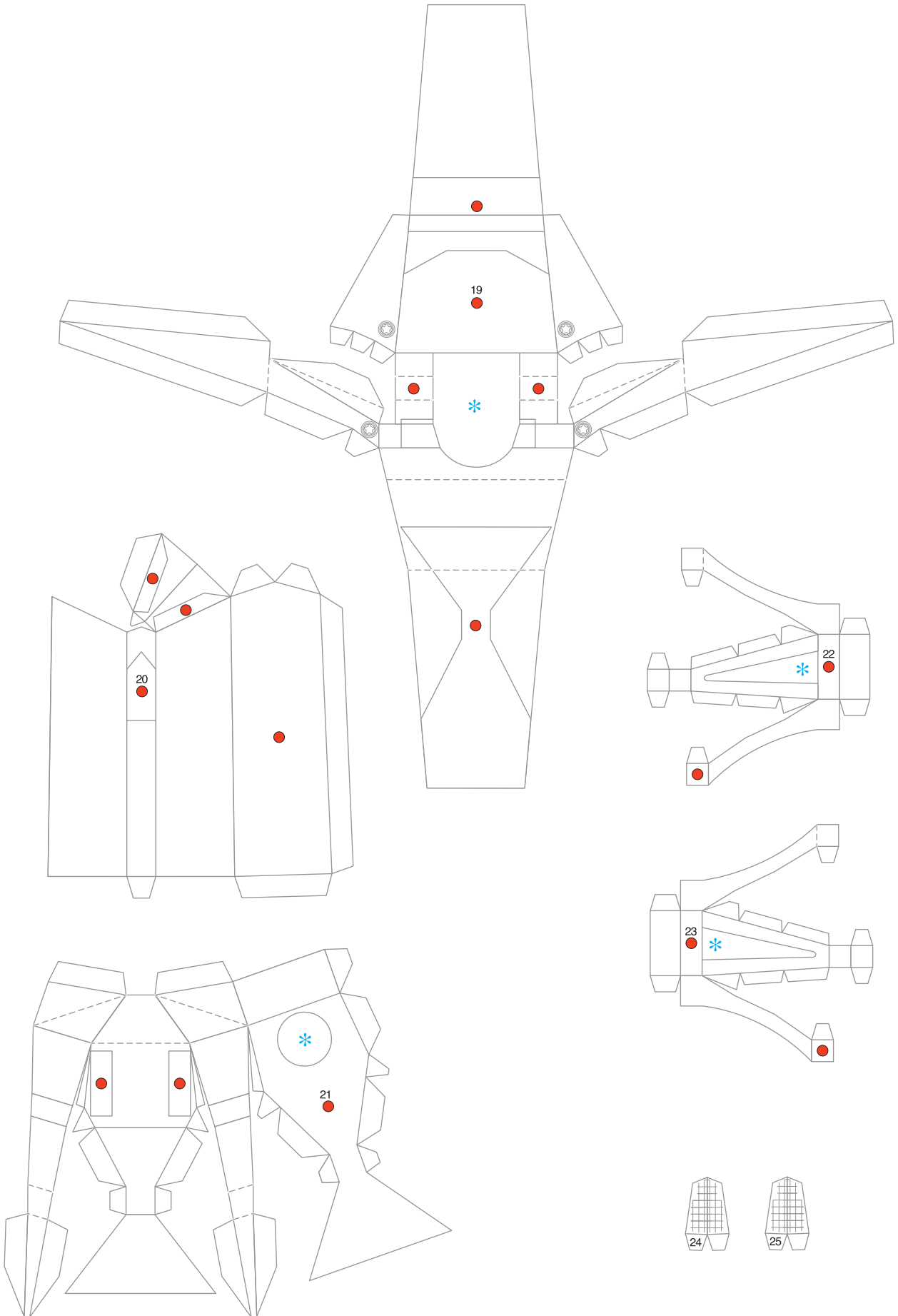
C Frame1



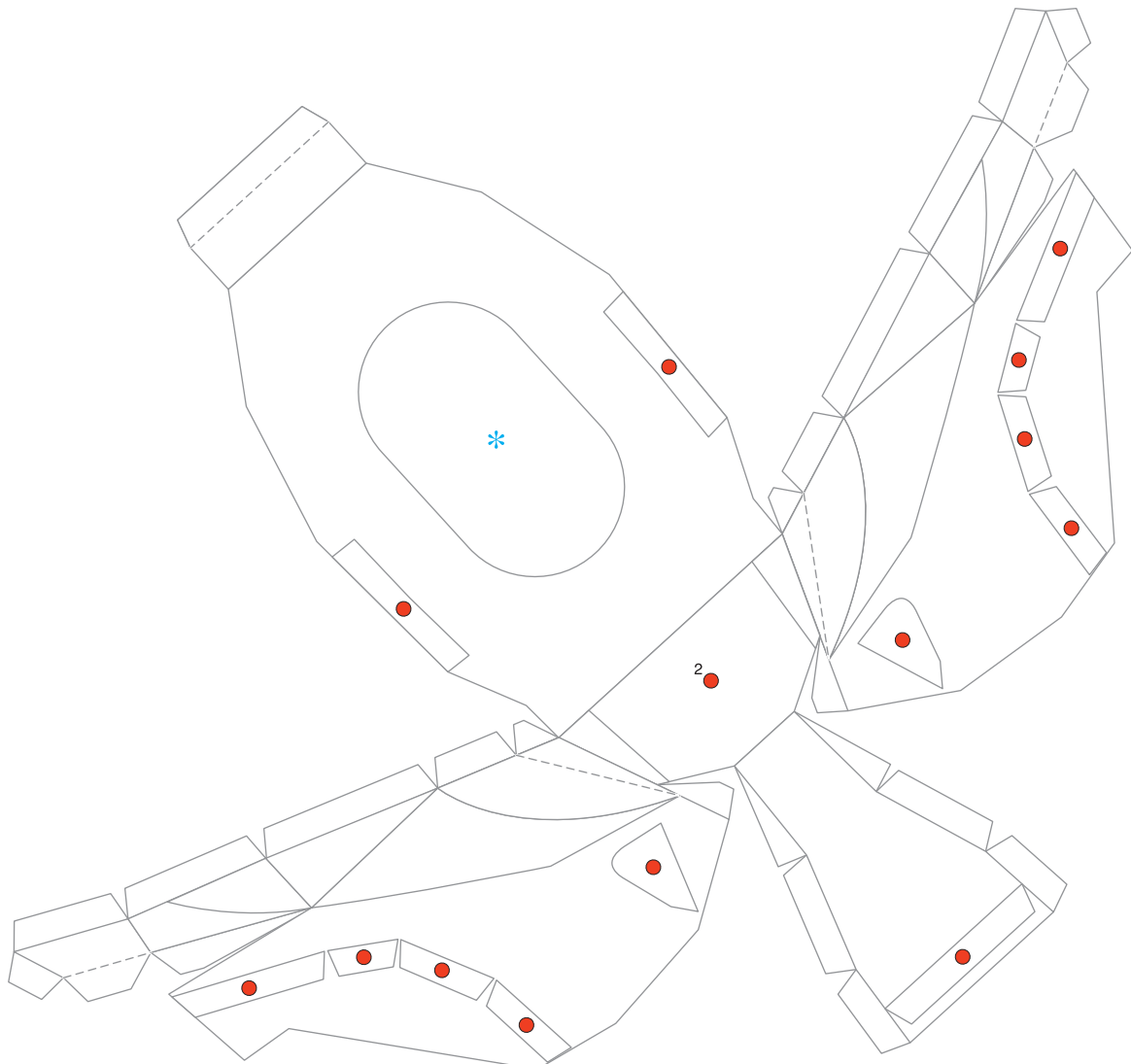
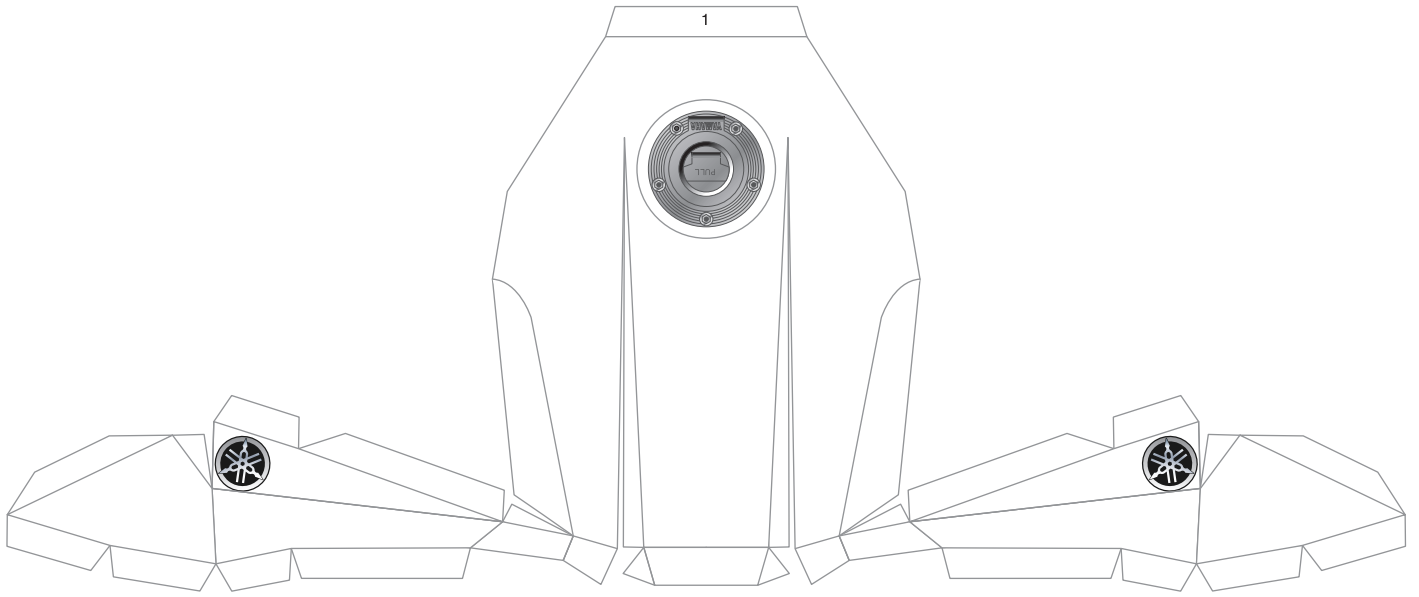
C Frame1



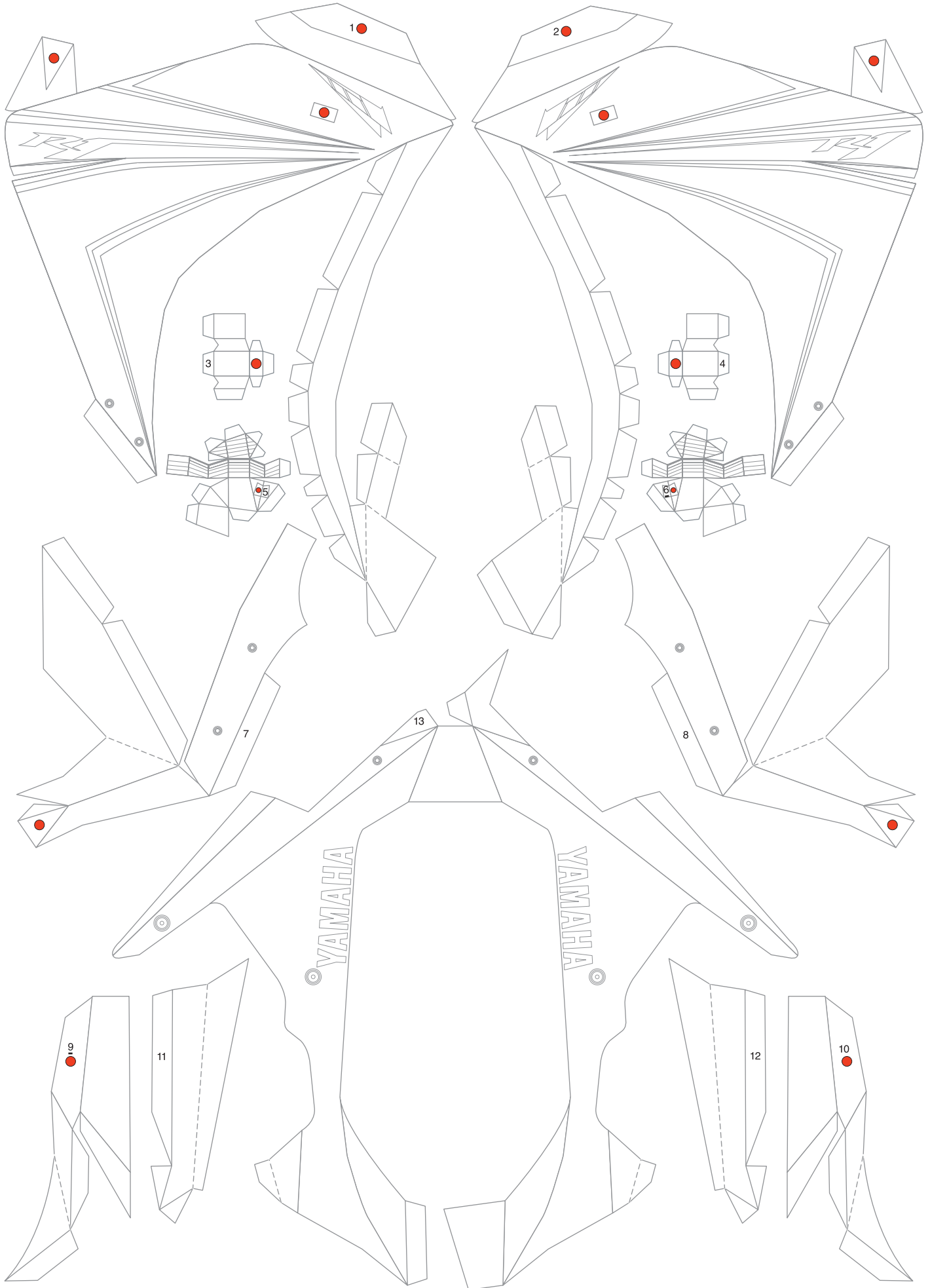
C Frame 2



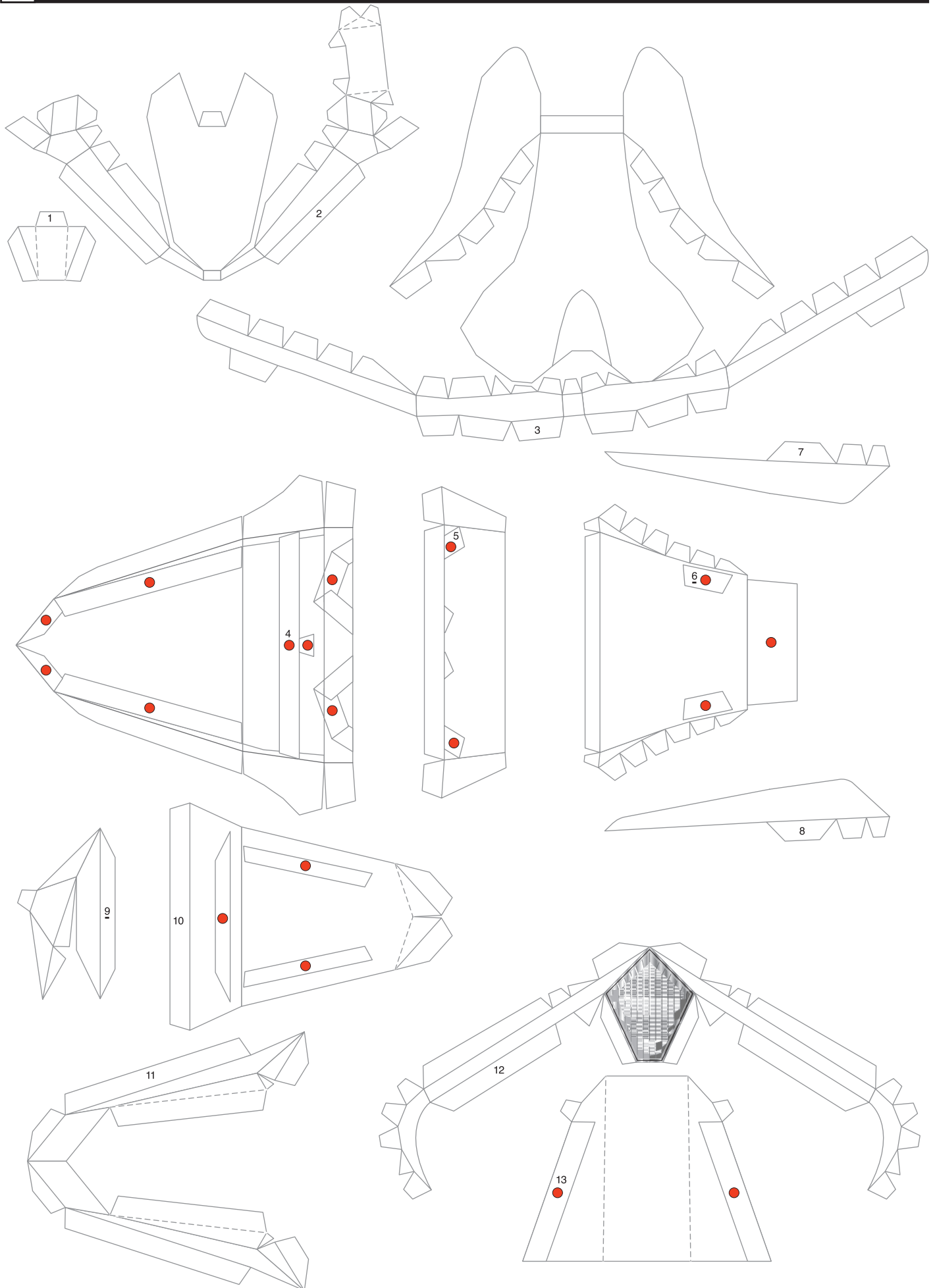
D Fuel Tank



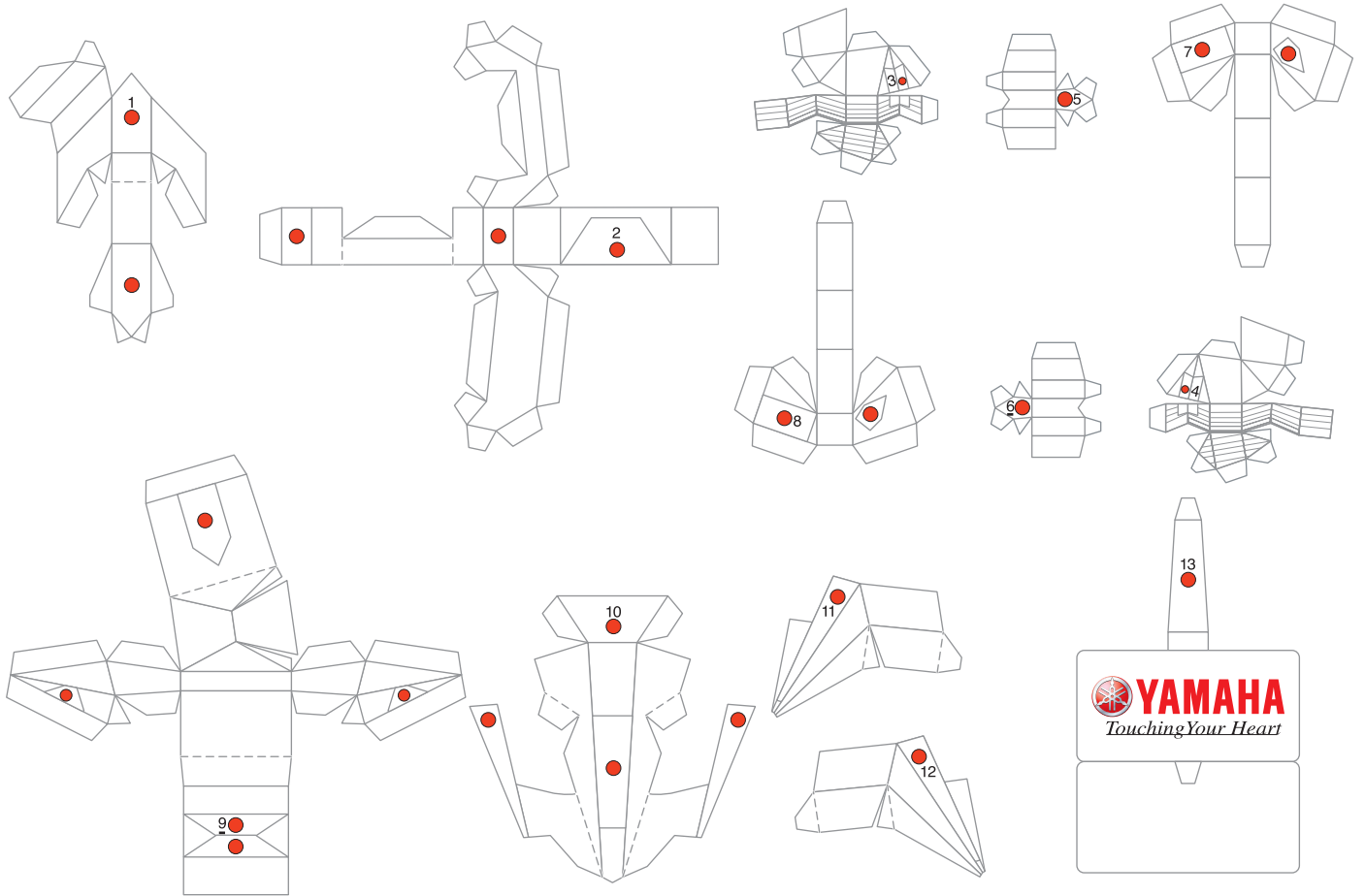
E Under Cowl



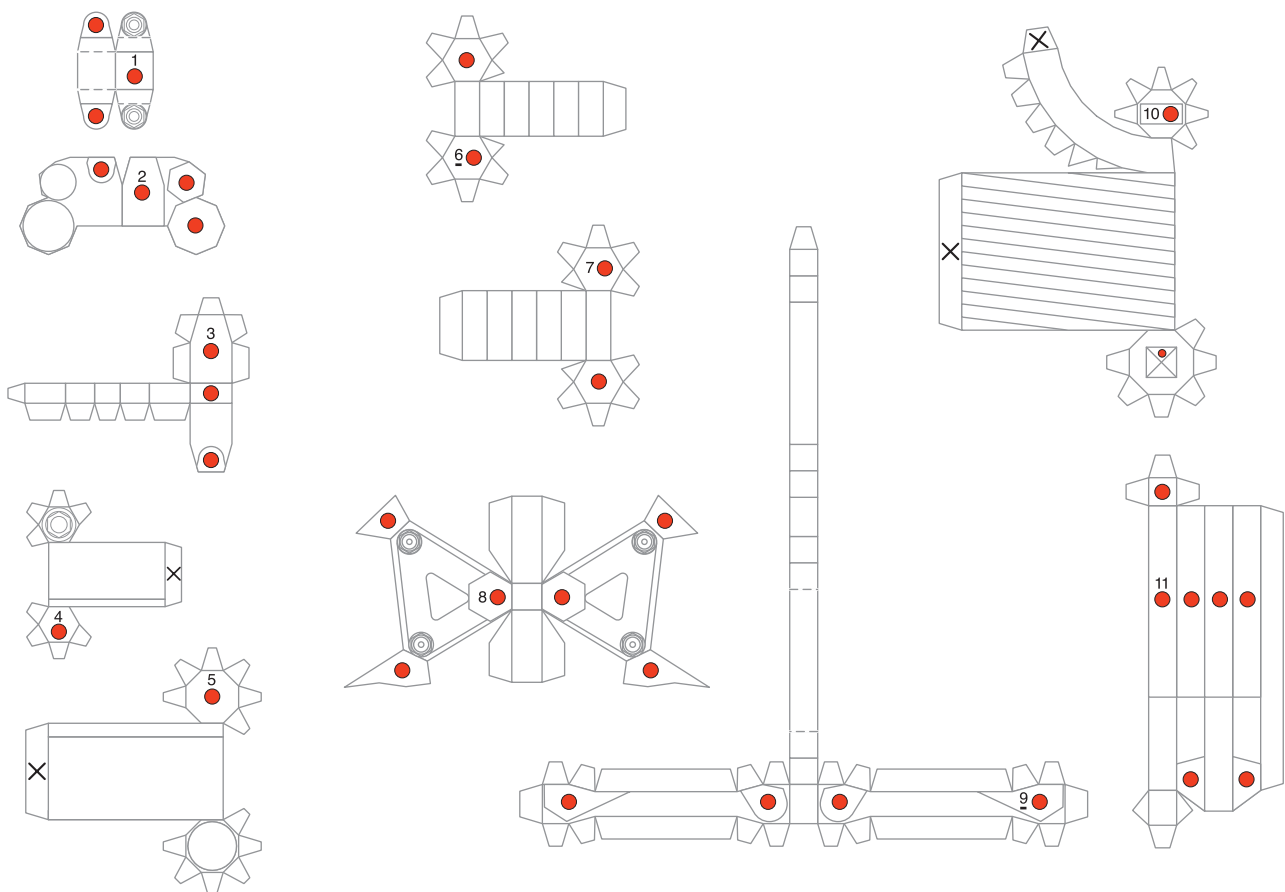
F Seat Cowl



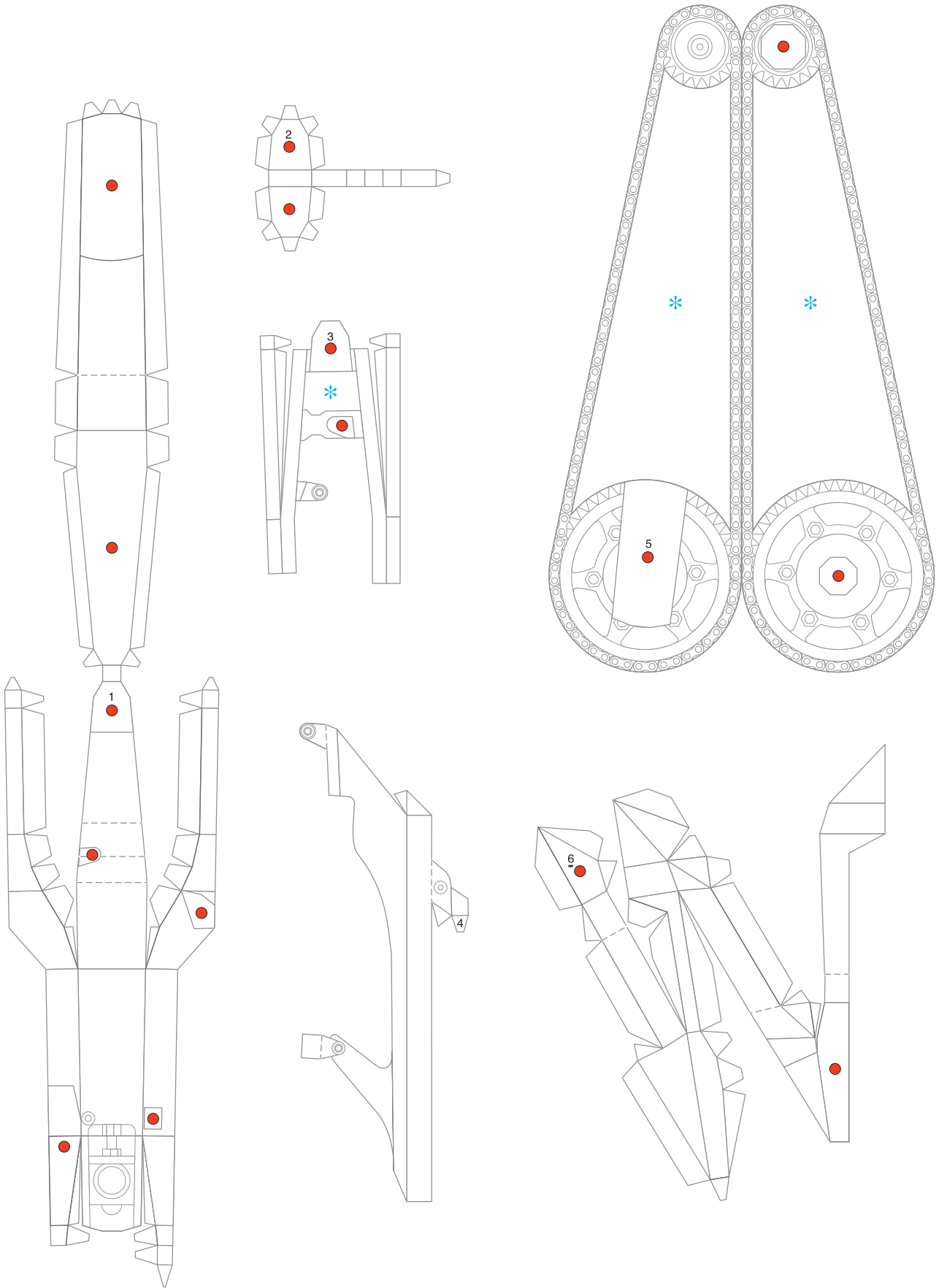
G Taillight



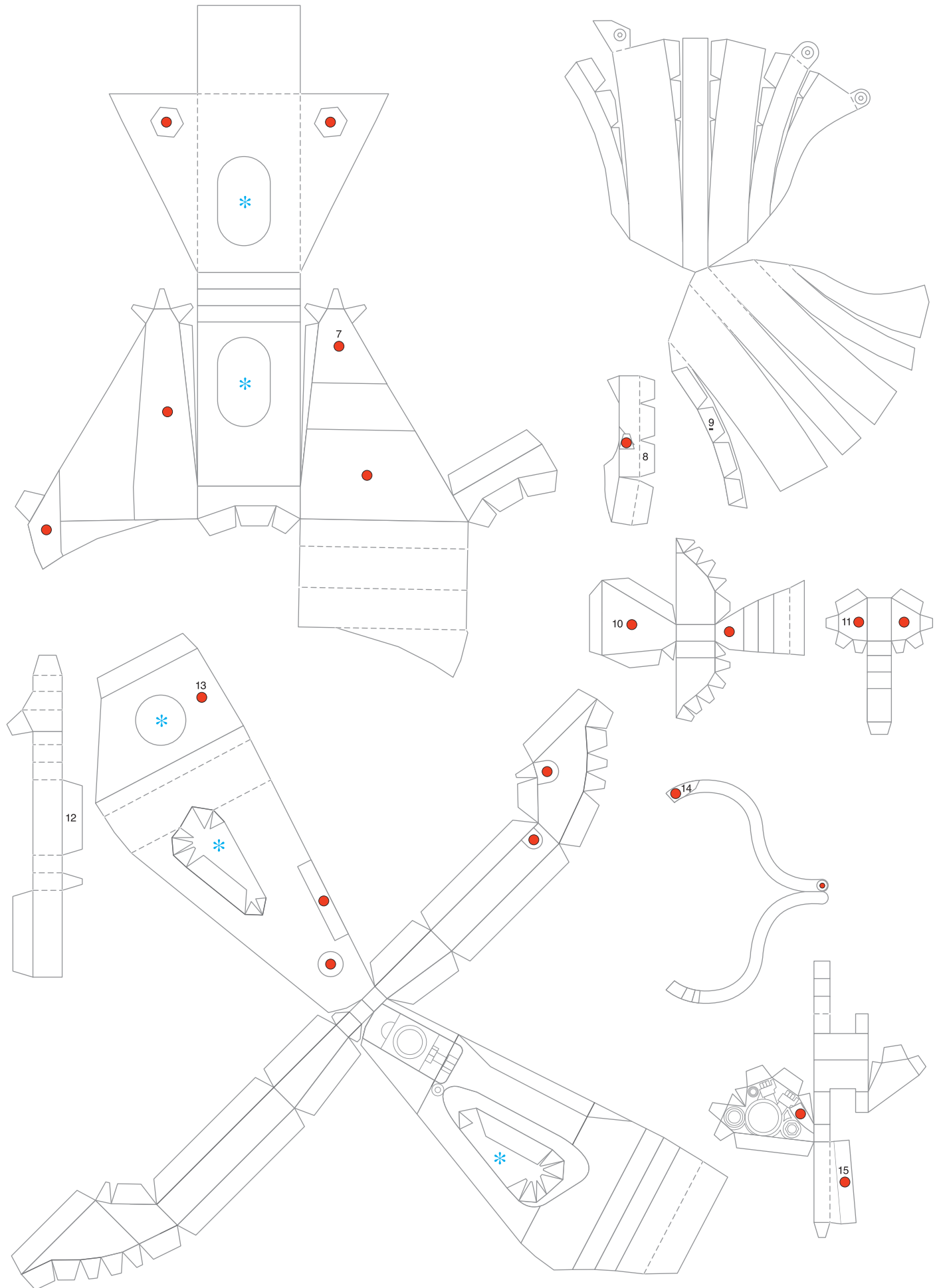
H Rear Suspension



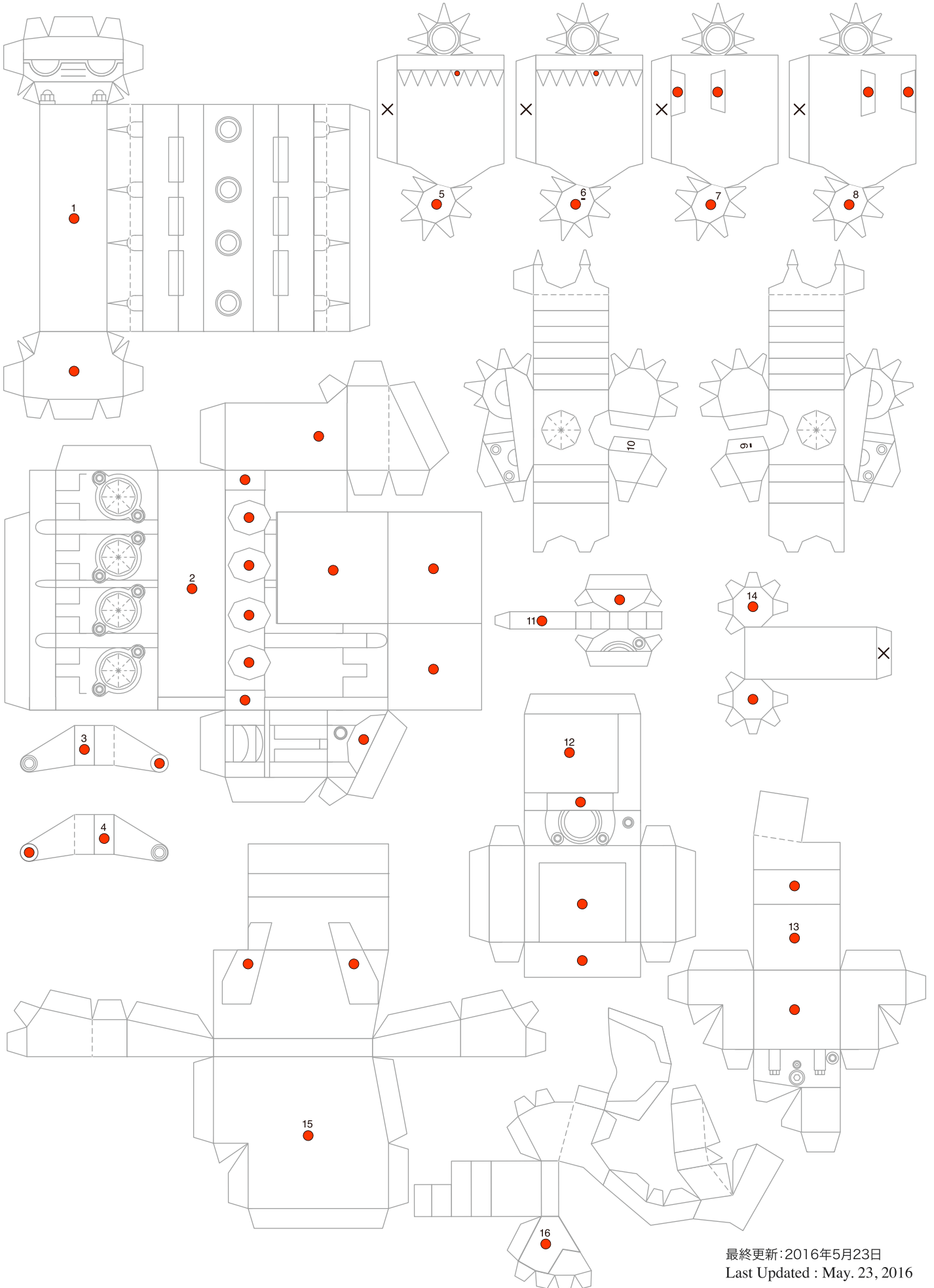
I Rear Arm



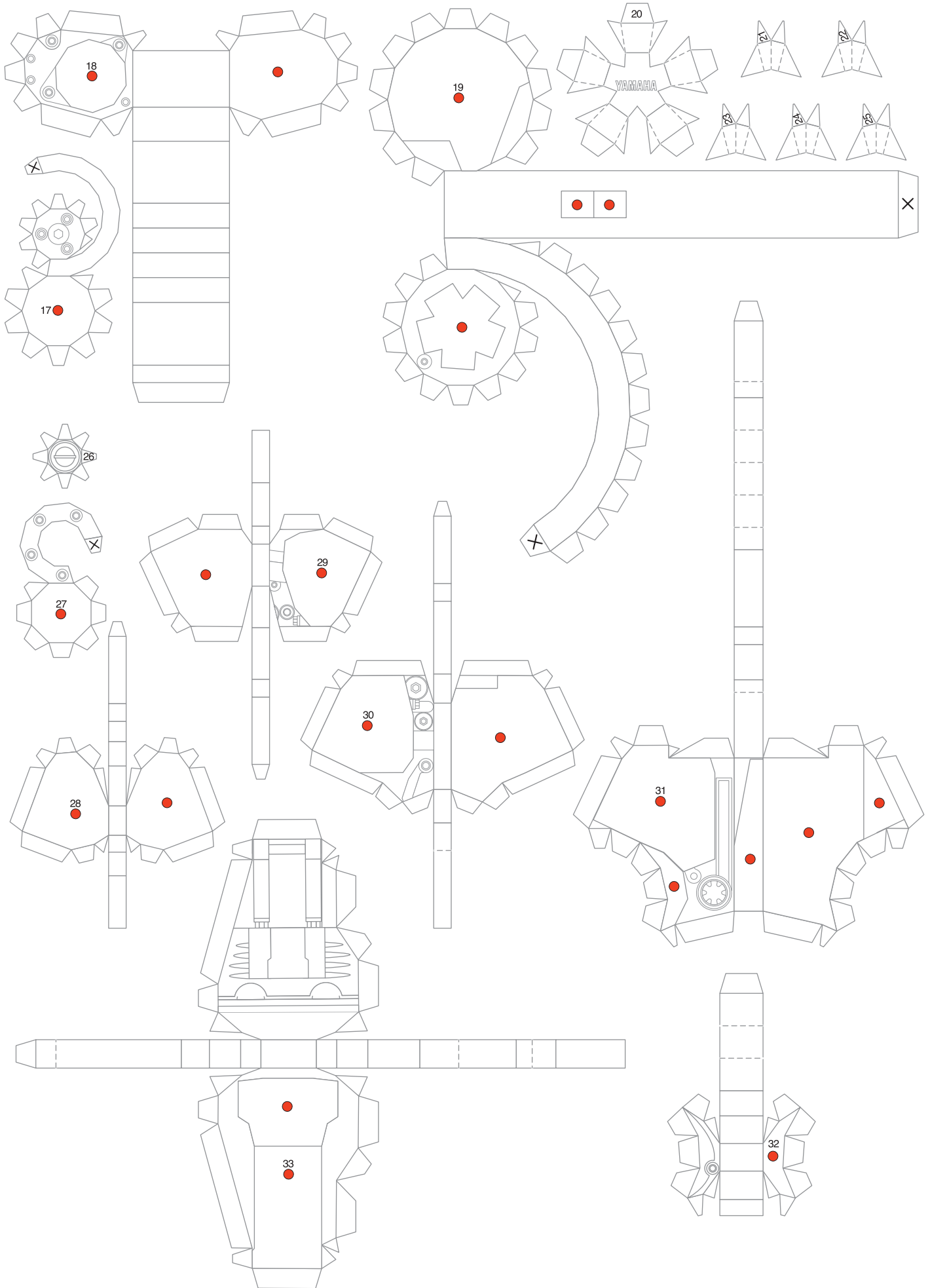
I Rear Arm



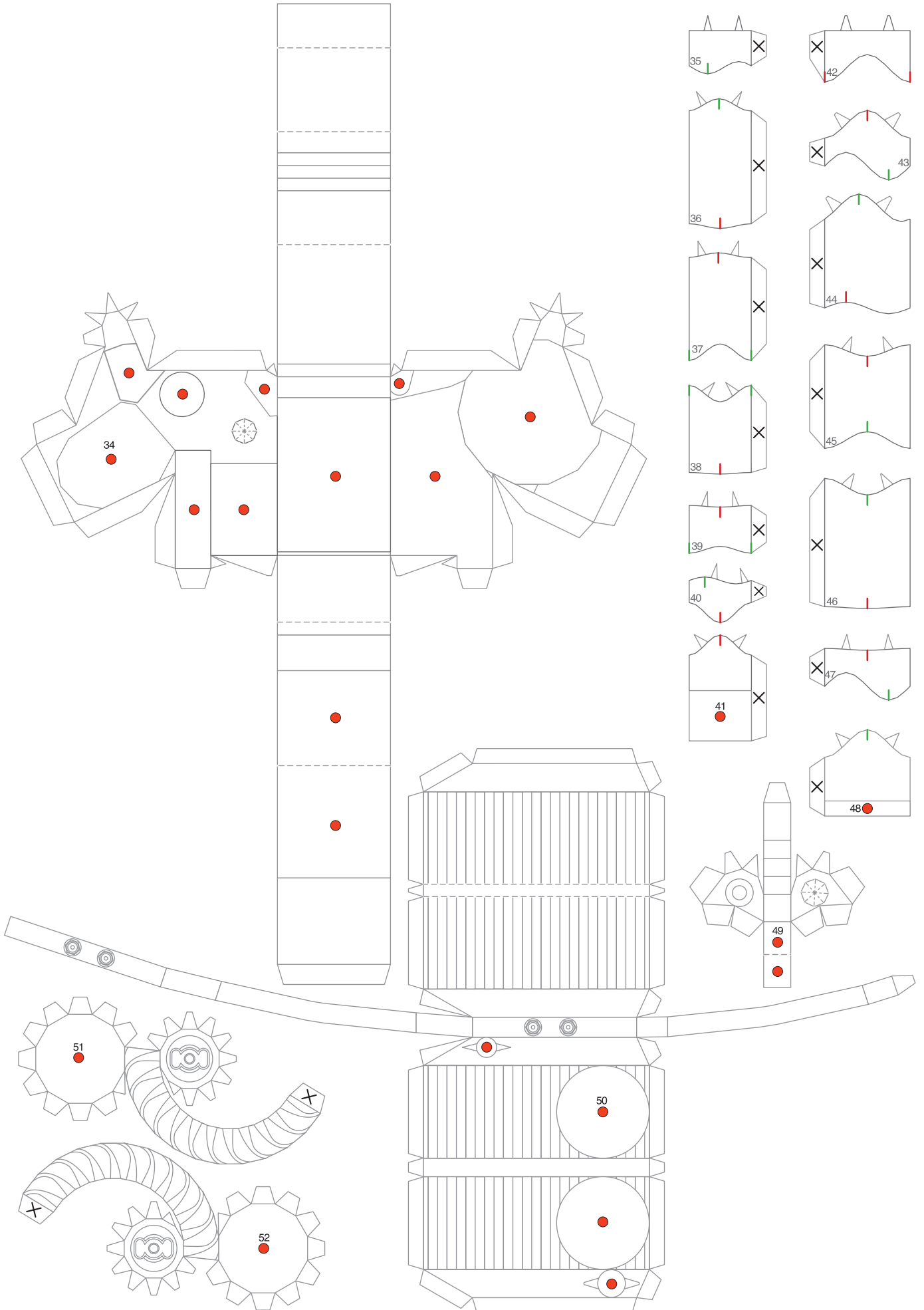
J Engine



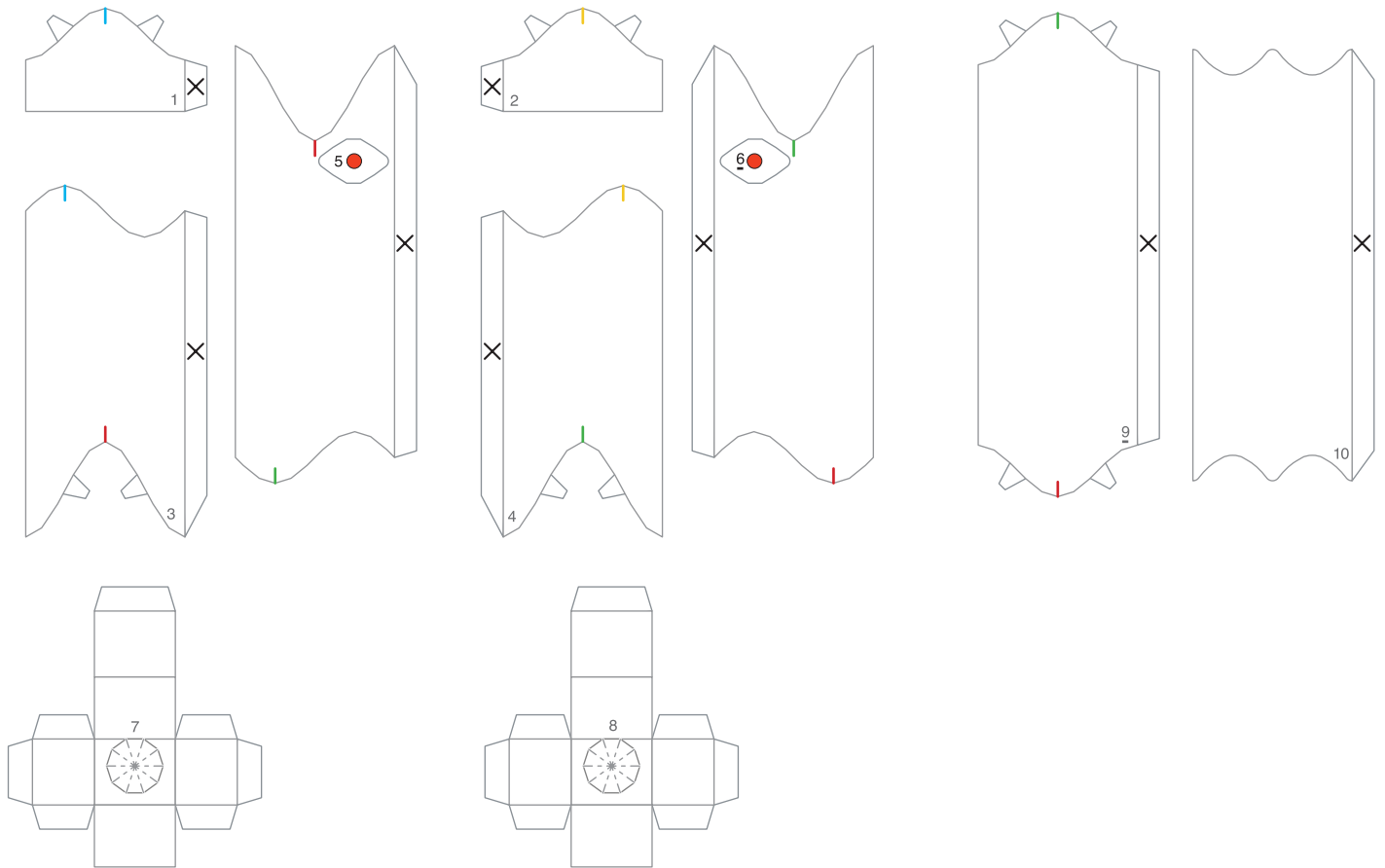
J Engine



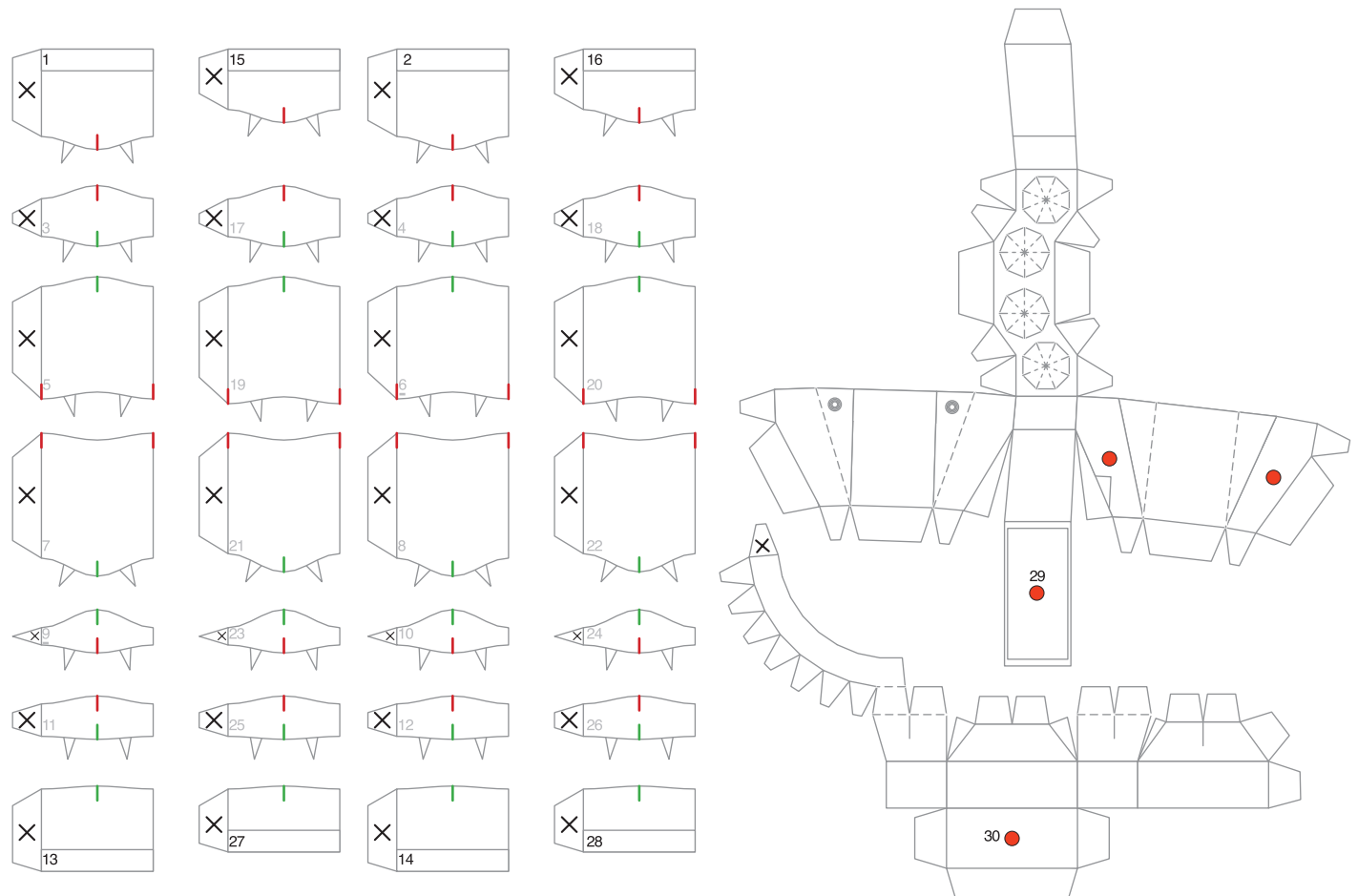
J Engine & Radiator



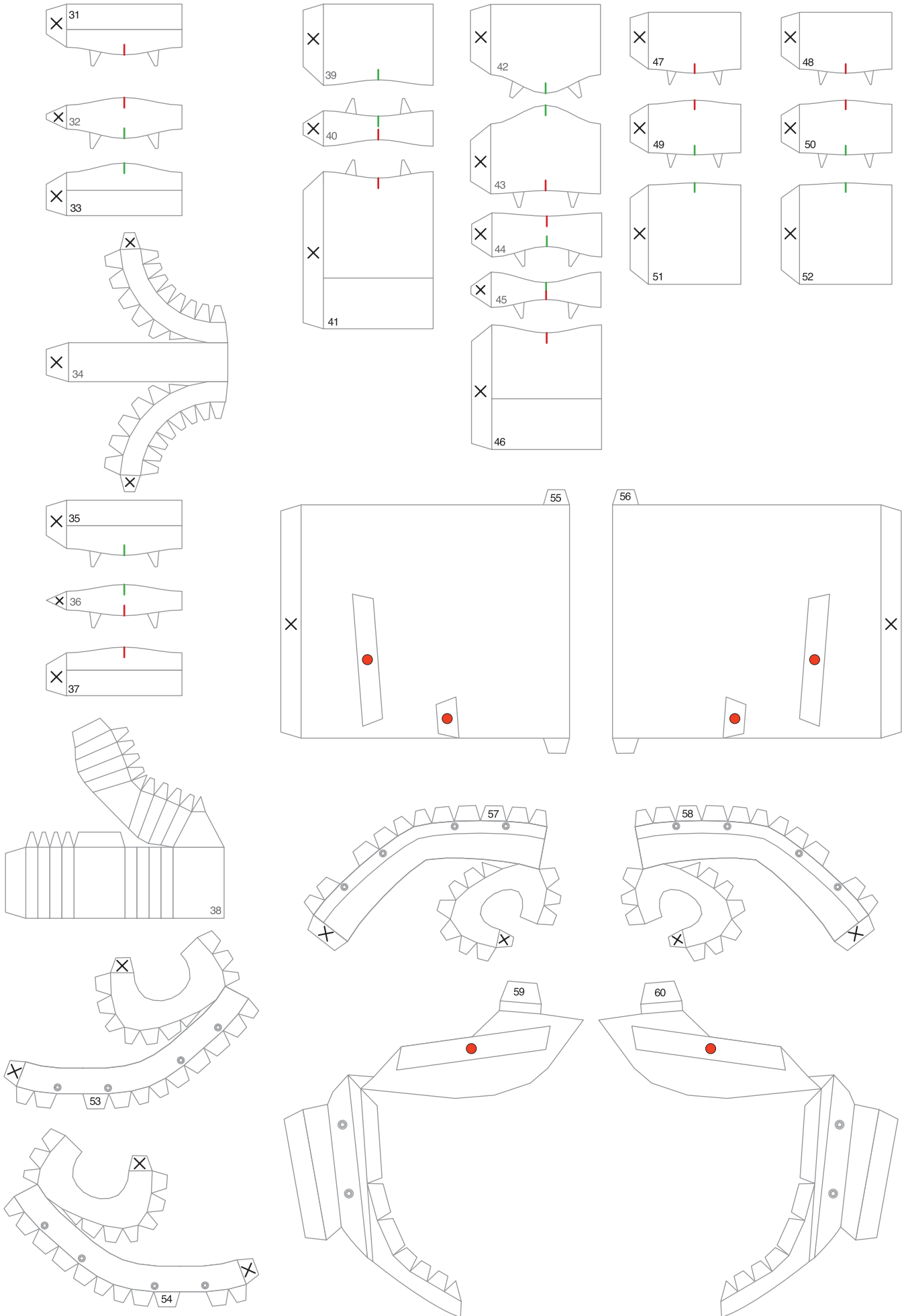
K Stand



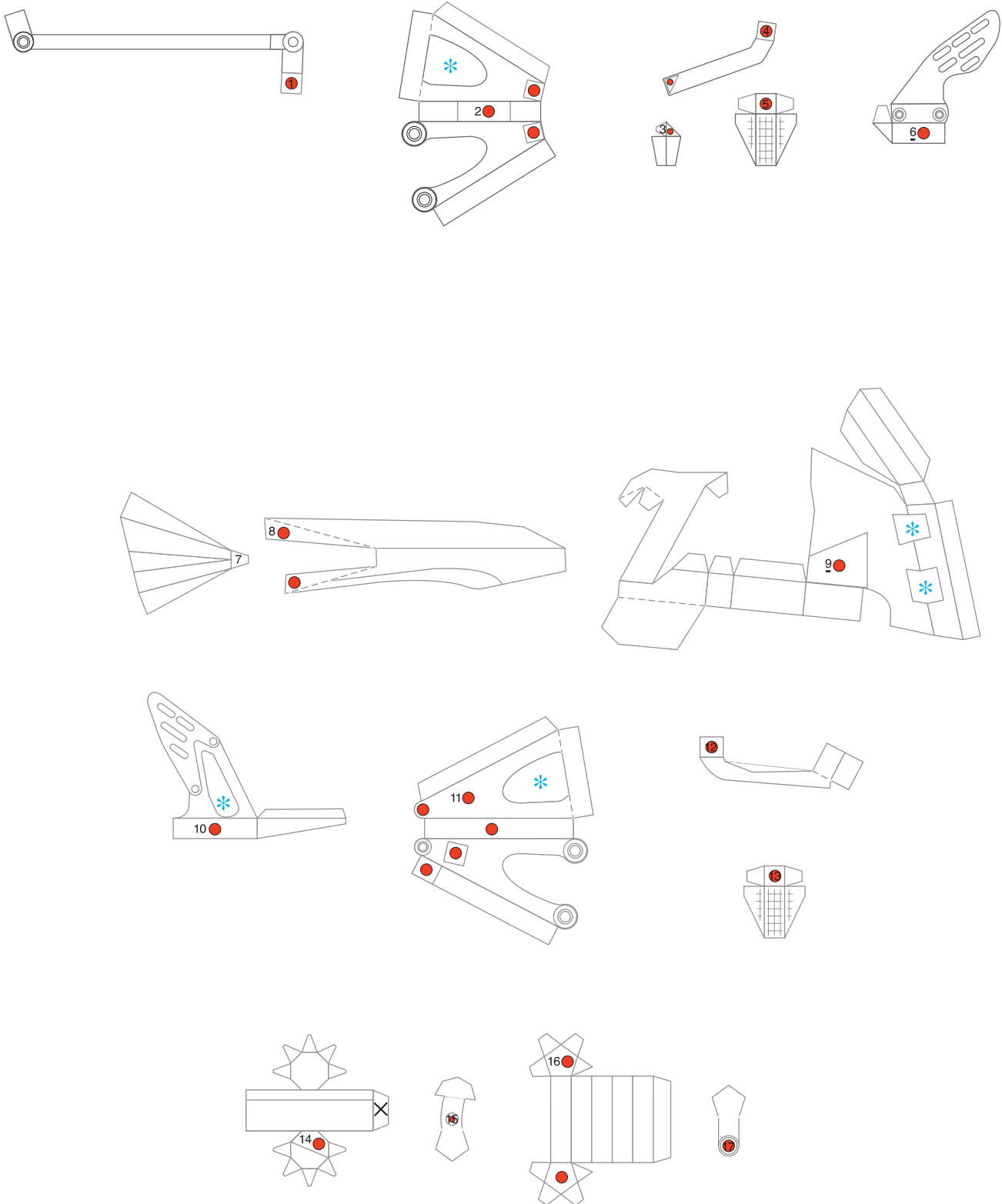
L Exhaust Pipes



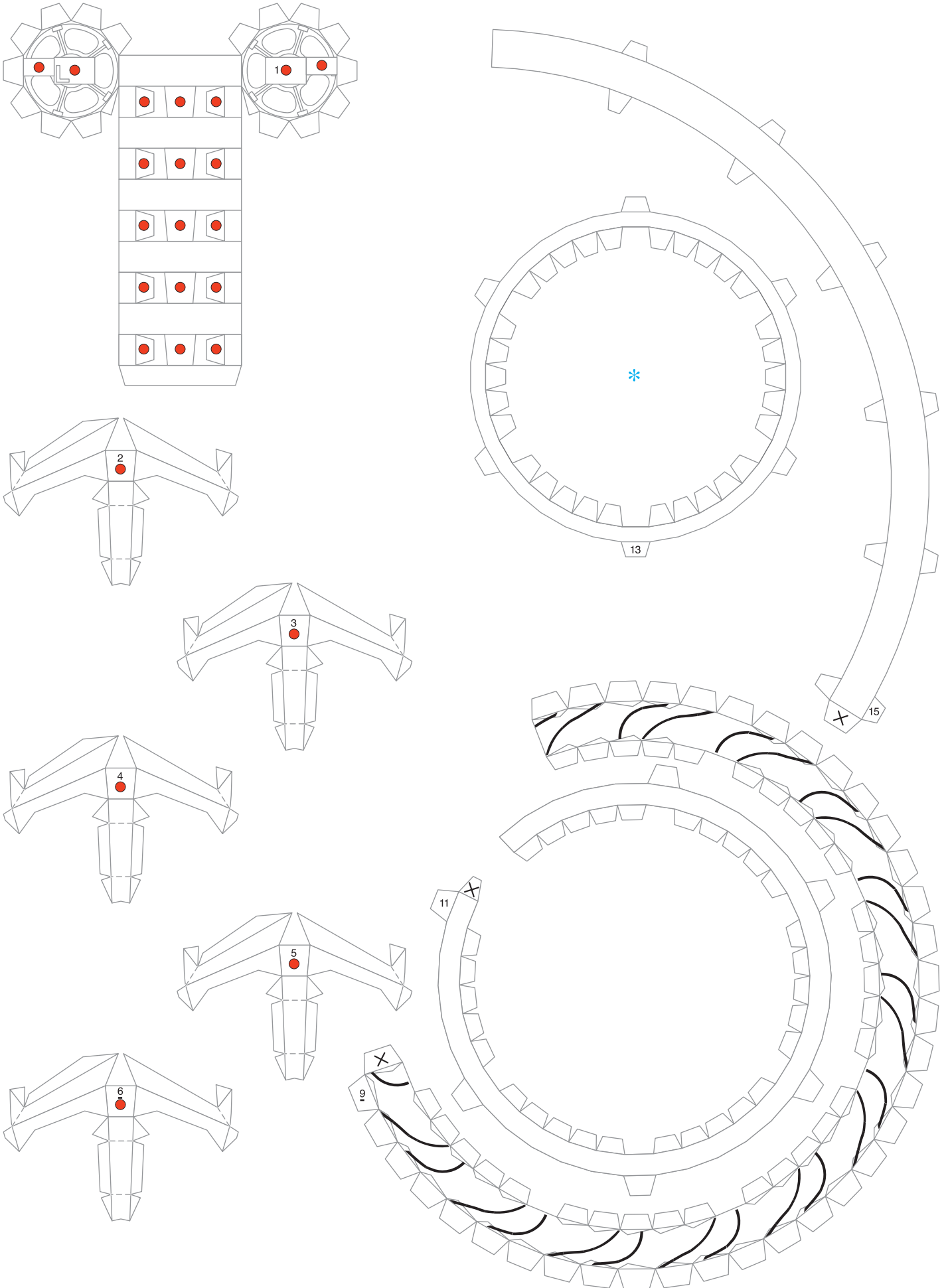
L Exhaust Pipes



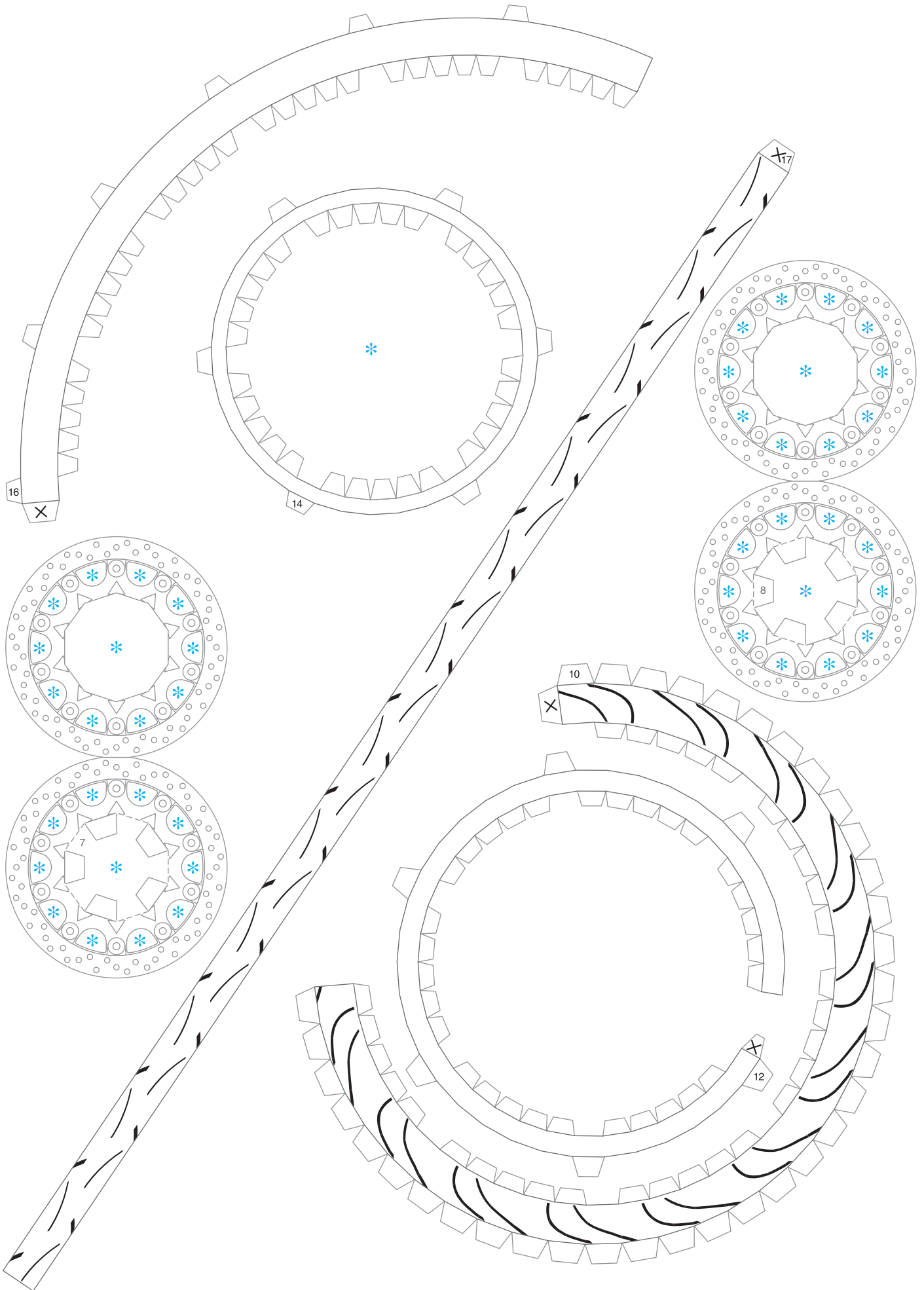
M Left footrests & Right footrests



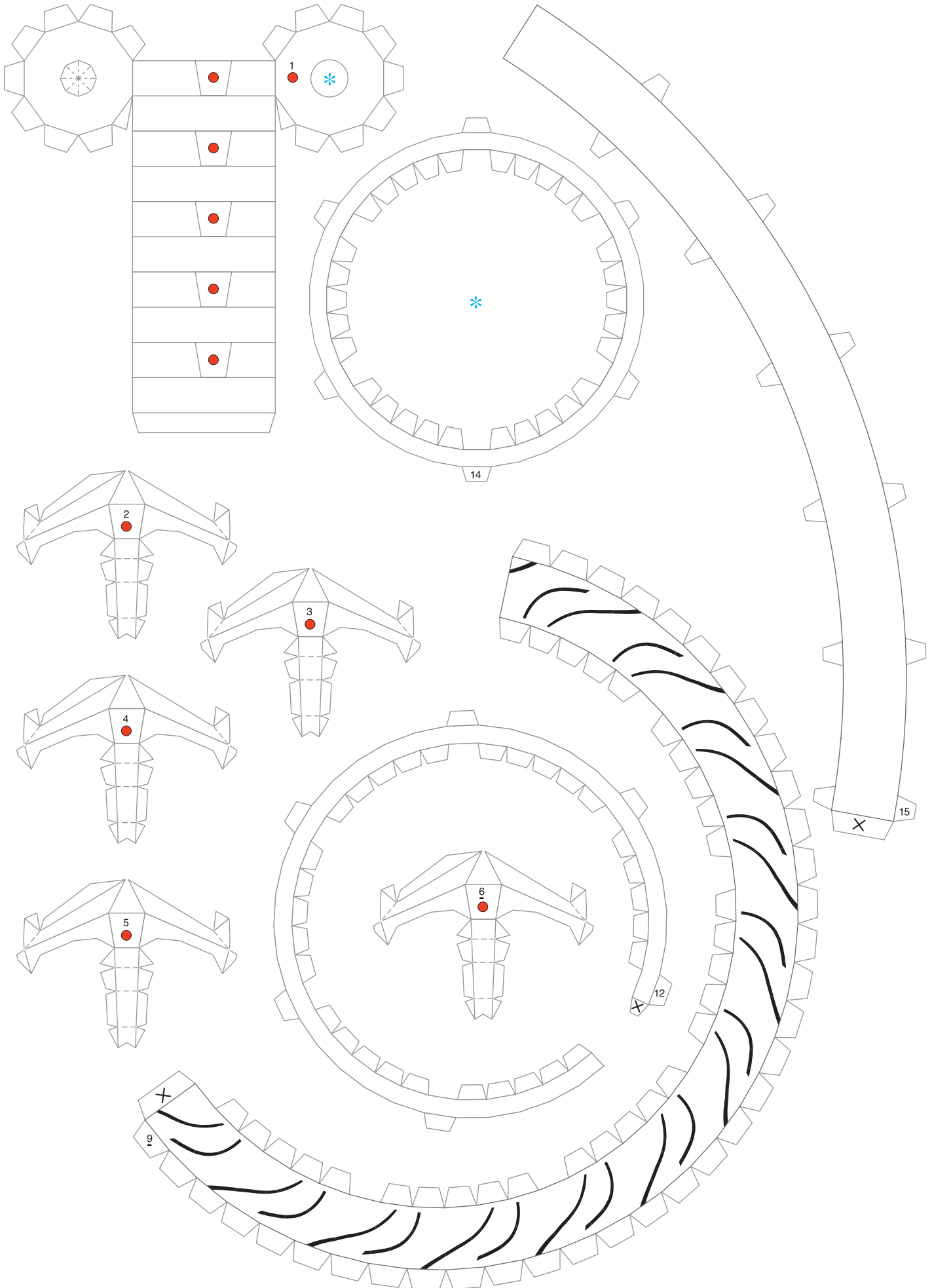
N Front wheel & Front Tire



N Front wheel & Front Tire



O Rear wheel & Rear Tire



O Rear wheel & Rear Tire

